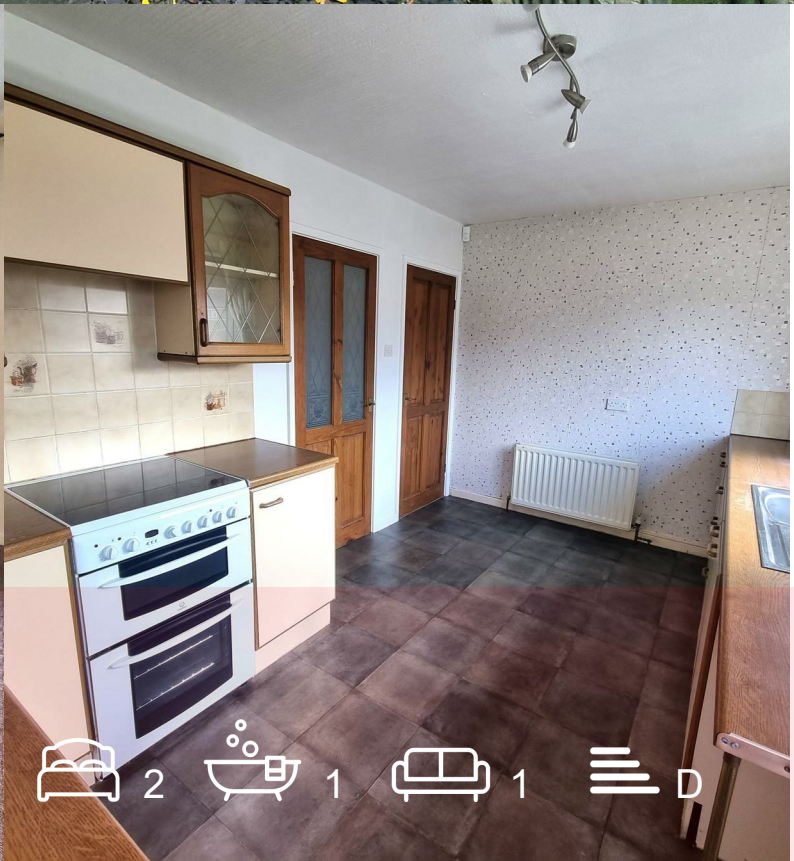




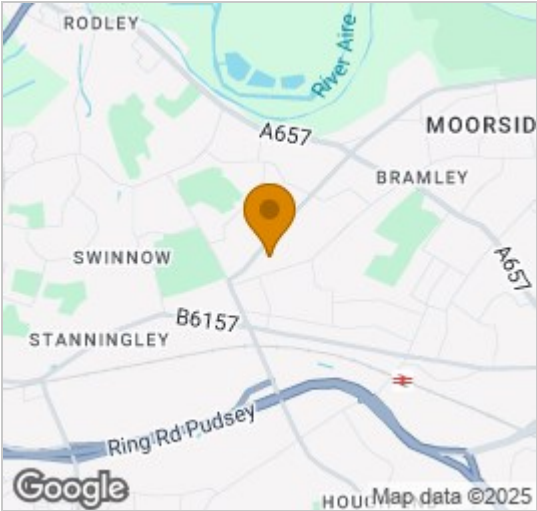
17 Mill Lane
, Leeds, LS13 3HE
£170,000



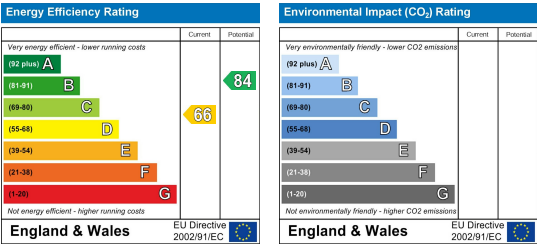
Floor Plan



Area Map



Energy Efficiency Graph



Viewing

Please contact our Farsley Office on 0113 204 0322 if you wish to arrange a viewing appointment for this property or require further information.

- NO ONWARD CHAIN
- T W O D O U B L E BEDROOMS
- GARAGE
- DINING KITCHEN
- ENCLOSED FRONT AND REAR GARDENS
- IDEAL FIRST TIME BUYER HOME!

Nestled in a residential area of Bramley, Mill Lane presents an excellent opportunity for first-time buyers, investors and small families who are seeking a delightful two-bedroom end terrace house. Spanning 732 square feet, this property boasts a garage and off-road parking, ensuring convenience for residents and visitors alike.

The location is particularly advantageous, with access to both road and rail links, making commuting easy. Furthermore, a variety of local amenities and schools catering to all ages are within walking distance, enhancing the appeal for families and individuals alike.

Upon entering, you will find an enclosed front and rear garden, perfect for enjoying the outdoors or creating a personal sanctuary. The interior features a well-appointed kitchen dining area, generous size living room and two double bedrooms. With white three-piece bathroom suite complete with a shower over the bath.

With its prime location and potential for a whole range of buyers looking to make this fabulous property their own home - Early viewing is highly recommended!!

SOLD WITH NO ONWARD CHAIN



These particulars, whilst believed to be accurate are set out as a general outline only for guidance and do not constitute any part of an offer or contract. Intending purchasers should not rely on them as statements of representation of fact, but must satisfy themselves by inspection or otherwise as to their accuracy. No person in this firm's employment has the authority to make or give any representation or warranty in respect of the property.